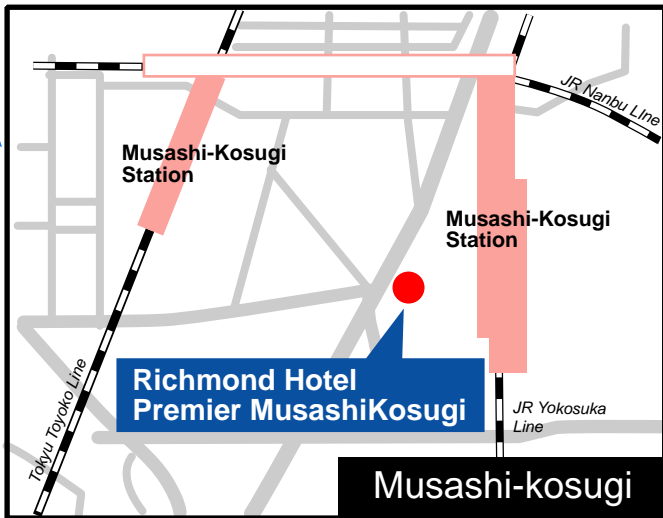
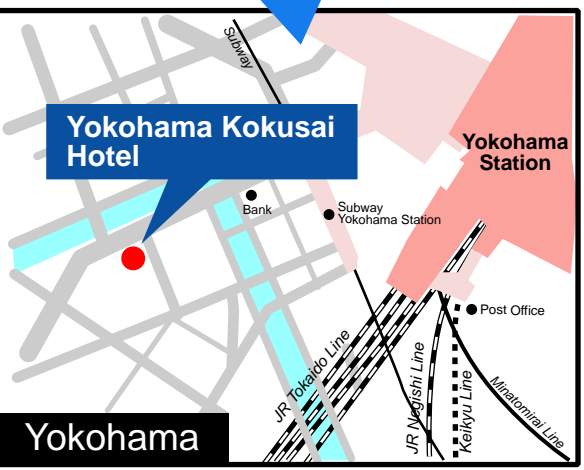
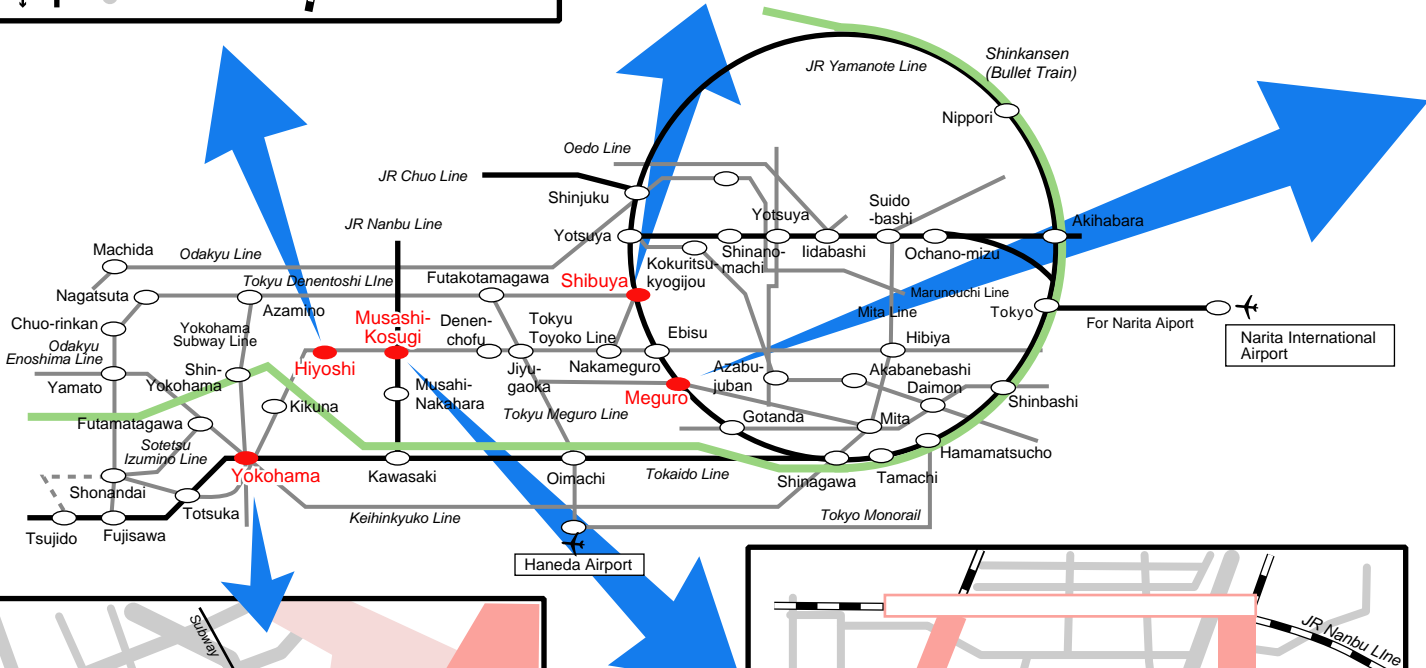
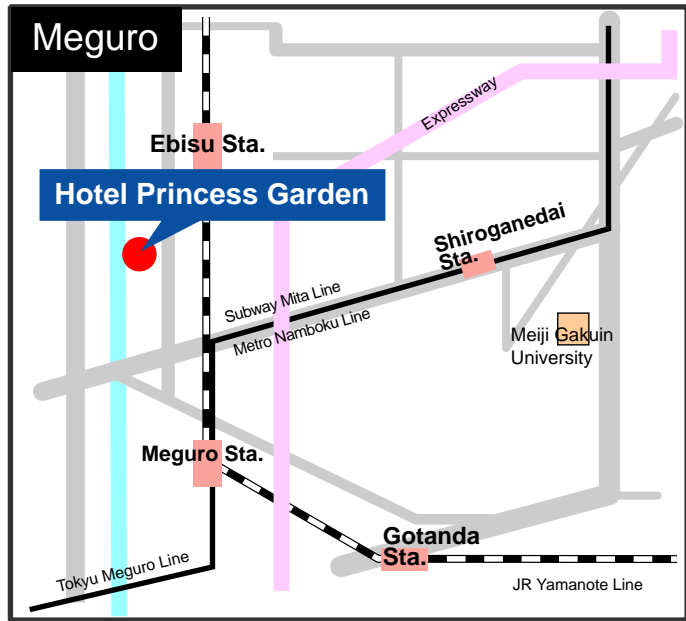
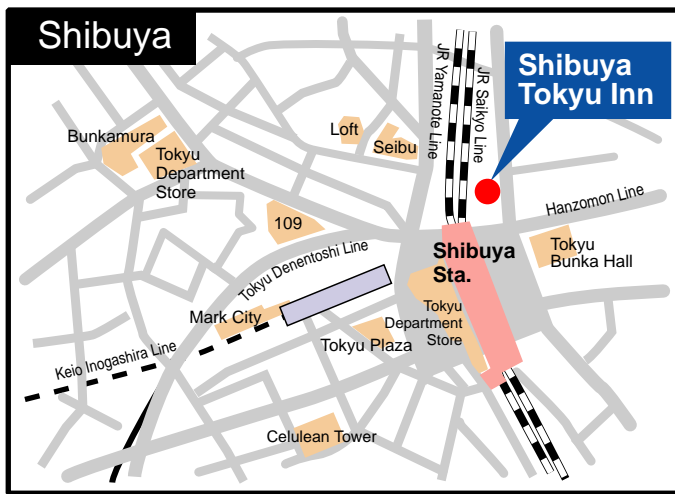
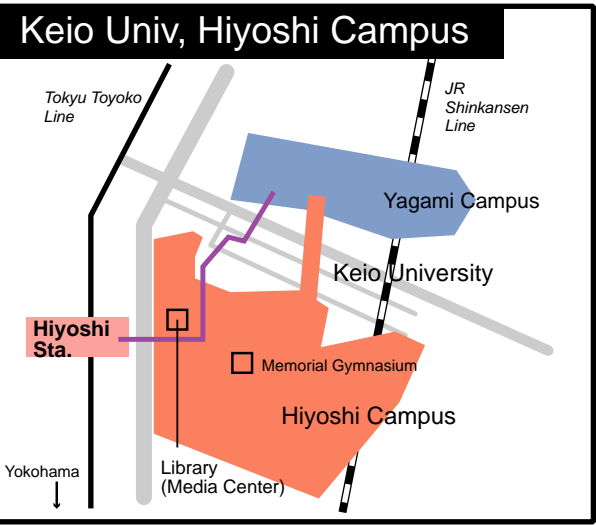
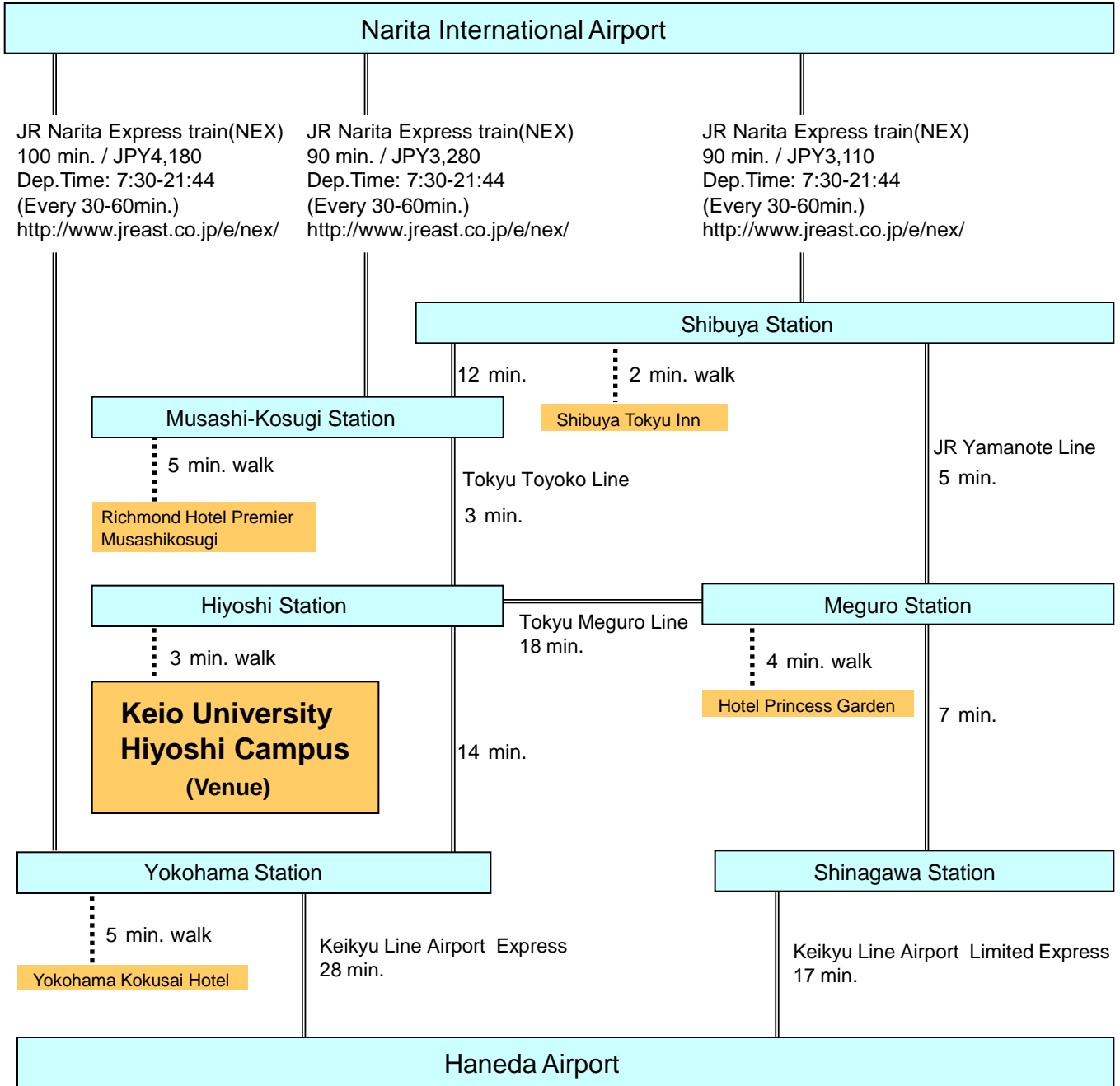


ACCESS MAP



ACCESS TO THE VENUE & HOTELS

1) Railway



2) Airport Limousine Bus

<http://www.limousinebus.co.jp/en/>

◆From Narita International Airport

For Shibuya

Fare: ¥3,000 / 85-125 min.
Dep.Time: 7:05-21:05
(Every 30-90min.)

For Yokohama

Fare: ¥3,500 / 85-110 min.
Dep.Time: 6:50-22:30
(Every 15-40min.)

◆From Haneda Airport

For Shibuya

Fare: ¥1,000 / 40-65 min
(Night Bus ¥2,000.)
Dep.Time: 6:10-24:30
(Every 30-60min.)